

# UNILOCK

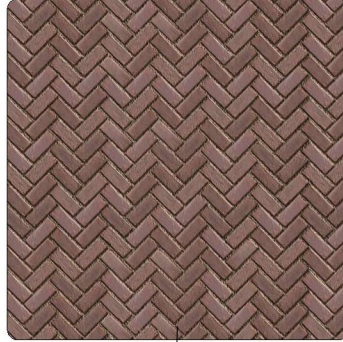
# TOWN HALL



Paver - Concrete - Unilock - 4" x 10" x 2-3/4" - Herringbone - Town Hall - Basalt - Reala Historic Street Brick



Paver - Concrete - Unilock - 4" x 10" x 2-3/4" - Herringbone - Town Hall - BC/BR/OO Blend - Reala Historic Street Brick



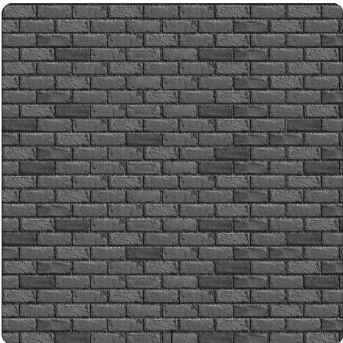
Paver - Concrete - Unilock - 4" x 10" x 2-3/4" - Herringbone - Town Hall - Burgundy Red - Reala Historic Street Brick



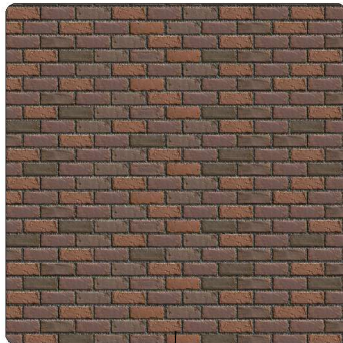
Paver - Concrete - Unilock - 4" x 10" x 2-3/4" - Herringbone - Town Hall - Burnt Clay - Reala Historic Street Brick



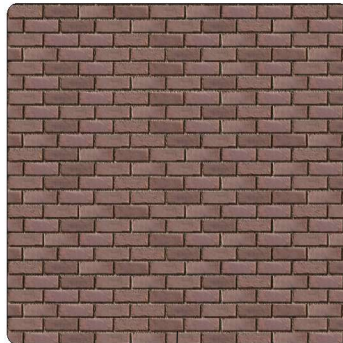
Paver - Concrete - Unilock - 4" x 10" x 2-3/4" - Herringbone - Town Hall - Old Oak - Reala Historic Street Brick



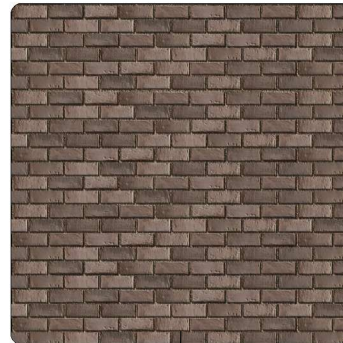
Paver - Concrete - Unilock - 4" x 10" x 2-3/4" - Running Bond - Town Hall - Basalt - Reala Historic Street Brick



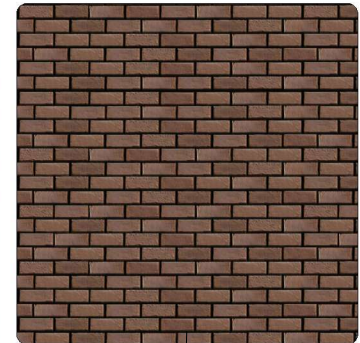
Paver - Concrete - Unilock - 4" x 10" x 2-3/4" - Running Bond - Town Hall - BC/BR/OO Blend - Reala Historic Street Brick



Paver - Concrete - Unilock - 4" x 10" x 2-3/4" - Running Bond - Town Hall - Burgundy Red - Reala Historic Street Brick



Paver - Concrete - Unilock - 4" x 10" x 2-3/4" - Running Bond - Town Hall - Burnt Clay - Reala Historic Street Brick



Paver - Concrete - Unilock - 4" x 10" x 2-3/4" - Running Bond - Town Hall - Old Oak - Reala Historic Street Brick



HOW TO  
TRANSFER  
MATERIALS



HOW TO  
RELINK  
MATERIALS

## UNILOCK

NEW ENGLAND, NEW YORK, MID-ATLANTIC, OHIO VALLEY, MIDWEST, ONTARIO, QUEBEC  
1-800-UNILOCK  
[HTTPS://UNILOCK.COM/CONTACTS/](https://unilock.com/contacts/)  
[HTTPS://UNILOCK.COM/](https://unilock.com/)

**UNILOCK**<sup>®</sup>  
DESIGNED TO CONNECT.™